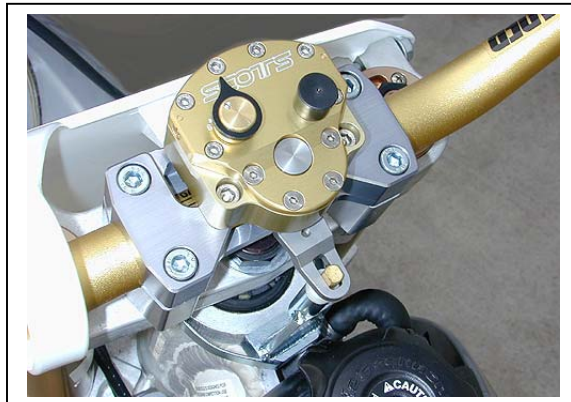
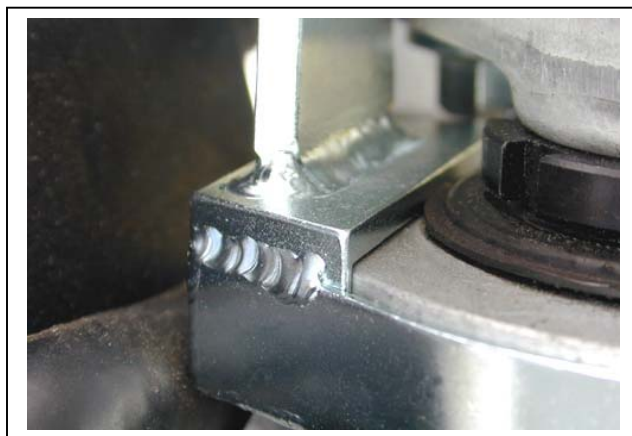
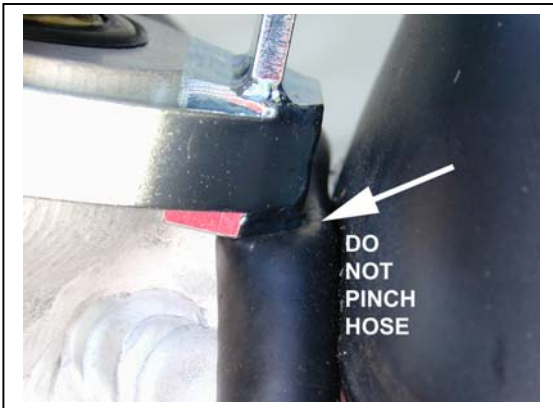


## Installation instructions for Cannondale 2000-03 X440, C440, E440, Mx400

**Notes:** Cannondale built 2 different frames in the same year and even they don't know which bikes came with which frames. Most have 77mm head tubes but some have 70mm head tubes. You'll know if you have the wrong one, it'll be way off. In rare cases the frame bracket might need drilling in order to secure it completely. These are very rare instances. Each bike varies according to the combination of parts (triple clamps and lower perches) being used, so common sense applies to the fitment. The goal is to keep the underside of the triple clamp and related parts from making contact with the frame bracket and keeping the frame bracket installed tightly against the shape of the head tube. Ok?

1. Remove your number plate and upper handlebar clamps. It is not necessary to remove the top triple clamp for this installation but it does make it easier should you prefer to get a better view of how the frame bracket is fitting. Note the photos for reference.
2. Install the Scott's frame bracket by removing the pinch bolt and spreading the bracket legs to reach around the front of your head tube. The rear of this bracket is machined to match the casting shape as close as possible but because it's a cast head tube, you might have to hand fit or file any rough casting flaws a little until it fits snugly and matches the shape of the head tube.
3. It is important to have the upper back edge of the bracket sitting down against the top surface of the head tube. This prevents the bracket from initially trying to rock back and forth. The initial installation of the frame bracket is very important in order to retain a long life of your stabilizer kit. Be sure it's secure, down flush as per the photo and tightened straight.
4. On some models the oil vent hose, just in front of the fuel tank, is in the way. In these rare cases re-route the vent hose to the right side of the bike as per the photo on this page. Be careful not to kink or prohibit the size of the vent tube at all.
5. Grease the floating tower pin and install in the tower, it is designed to float and should remain greased in the hole.
6. The tower pin can be moved up or down slightly by simply tapping on the pin, to move the nylon collar up or down.
7. Install your handlebars using our barclamp and tighten the 4 bolts evenly to keep the tower pin lined up in the slot in the link arm.
8. Refer to your owners manual for initial settings on the stabilizer and other general installation tips.
9. If you have any questions, please feel free to call us anytime as we are here to help you.



Optional: Re-routing vent tube down the right side.