

2625 Honolulu Ave · Montrose, CA 91020 · 818 248-6747 · Fax: 818 248-4529
www.scottsonline.com · e-mail: sales@scottsonline.com

Installation instructions for Honda Grom: SUB MOUNT KIT

1. **Important Notes:** This kit is designed to be used with the stock Triple clamps only. After market triple clamps may not work in co-ordination while using our frame bracket due to space limitations and or dimension layouts. This SUB Mount kit is designed to be used with Over-sized handlebars. Standard diameter handlebars can be used but will require our Bar reducers.
2. Be sure to use Loc-tite on all nuts and bolts you remove or install in the kit.
3. Review the photos before starting, so you have an idea of what is being explained as a whole. Follow the order of installation to make it easier. Some photos have "silver" parts to make it easier for you to see the detail. Finished parts are black.
4. Remove the 2 nuts on the bottom side of your triple clamps that hold the handlebar mounts to the triple clamps.
5. Remove the (4) bolts that hold your handlebars tight and remove the upper bar-clamps. Lay the bars carefully forward, on a towel covering the gauges. Remove the lower handlebar mounts along with the rubber bar mounting cones.
6. Install the stock rubber cones onto our SUB Assembly and install the SUB Assembly into the triple clamps. Put the lower rubber cones and washer in from the bottom and tighten the nuts so the SUB Assembly is now fixed to the triple clamp.
7. Slightly loosen the (4) bolts holding the frame bracket tower to the frame bracket side rails, just loose enough so they will allow alignment of the side rails. Install the Scotts frame bracket onto the frame and line up the holes and using the (2) through bolts provided. The large bolt goes in the forward hole and the smaller bolt in the rearward hole. They might need slight tapping to get the bolts through the holes and in rare cases, the bolt holes in the frame might need very slight filing for the bolts to slide through cleanly. Tighten the through bolts so the bracket is snug to the frame.
8. NOTE: The wire loom tie on the left side needs to be removed from top side of the bracket on the frame and switched to the bottom side of the bracket or just use a standard zip tie to secure it.
9. Now remove each 5mm tower bolt, one at a time, and put Loc-Tite on each bolt, reinstall and tighten.
10. Grease the shaft portion of the tower pin that goes into hole, and install the tower pin. Keep the tower pin greased so it's free to float during use. This insures the tower pin is free to align itself during use.
11. Install the Stabilizer while aligning the flats on the tower pin so they fit into the Stabilizer link-arm slot. Install the Stabilizer to the SUB Assembly using the (2) 6x20 Allen bolts provided. Be sure the collar on the tower pin does not touch the bottom side of the stabilizer link-arm. Note the correct tower pin height in the photo. The tower pin can be raised or lowered by simply tapping on the top or bottom of the pin while it's in the frame bracket, this will move the collar up or down allowing for fine adjustment of the tower pin height.
12. The new bars will require drilling 3/16" holes (similar to stock) in order to keep the controls from spinning on the bars. Locate the position you want your controls to be in and drill the holes accordingly. Transfer your controls to the new bars keeping track of how they were routed so as not to bind or interfere with turning from lock to lock. Install the bars and tighten the upper bar-clamps so the gap between the upper and lower perches is equal front and back.
13. See your Owner's Manual for "how to" adjust the knobs and valving settings. Start at softer settings and work up to stiffer, exact settings that suit your personal riding style.
14. If you have any questions, please feel free to call us anytime, as we are here to help you.

1. Step by step instructions. Be sure to read the text that accompanies these photos there is a specific order.



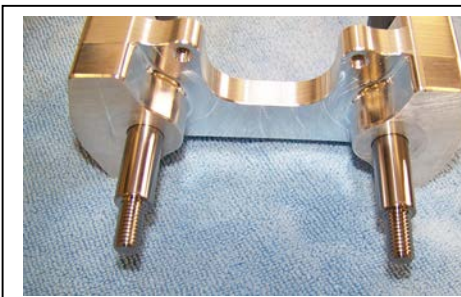
Complete SUB mount kit



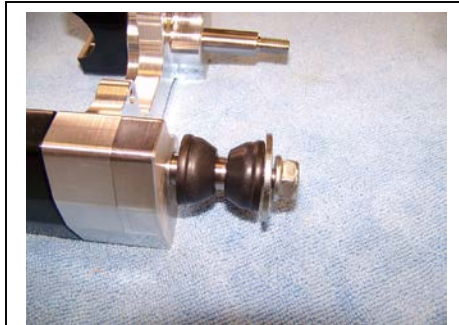
Frame bracket



Remove the handlebar mounts



Sub assembly with studs



This is how the rubber cones will end up after installation.



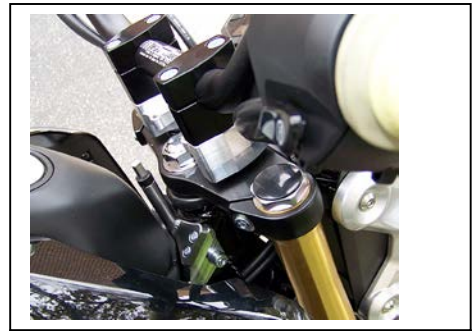
This shows the sub assembly in black installed on the triple clamp



Install the frame bracket assembly



Drill the bars 3/16" to retain controls



Mounting kit installed complete



Wire loom routed below bracket



Correct tower pin height